



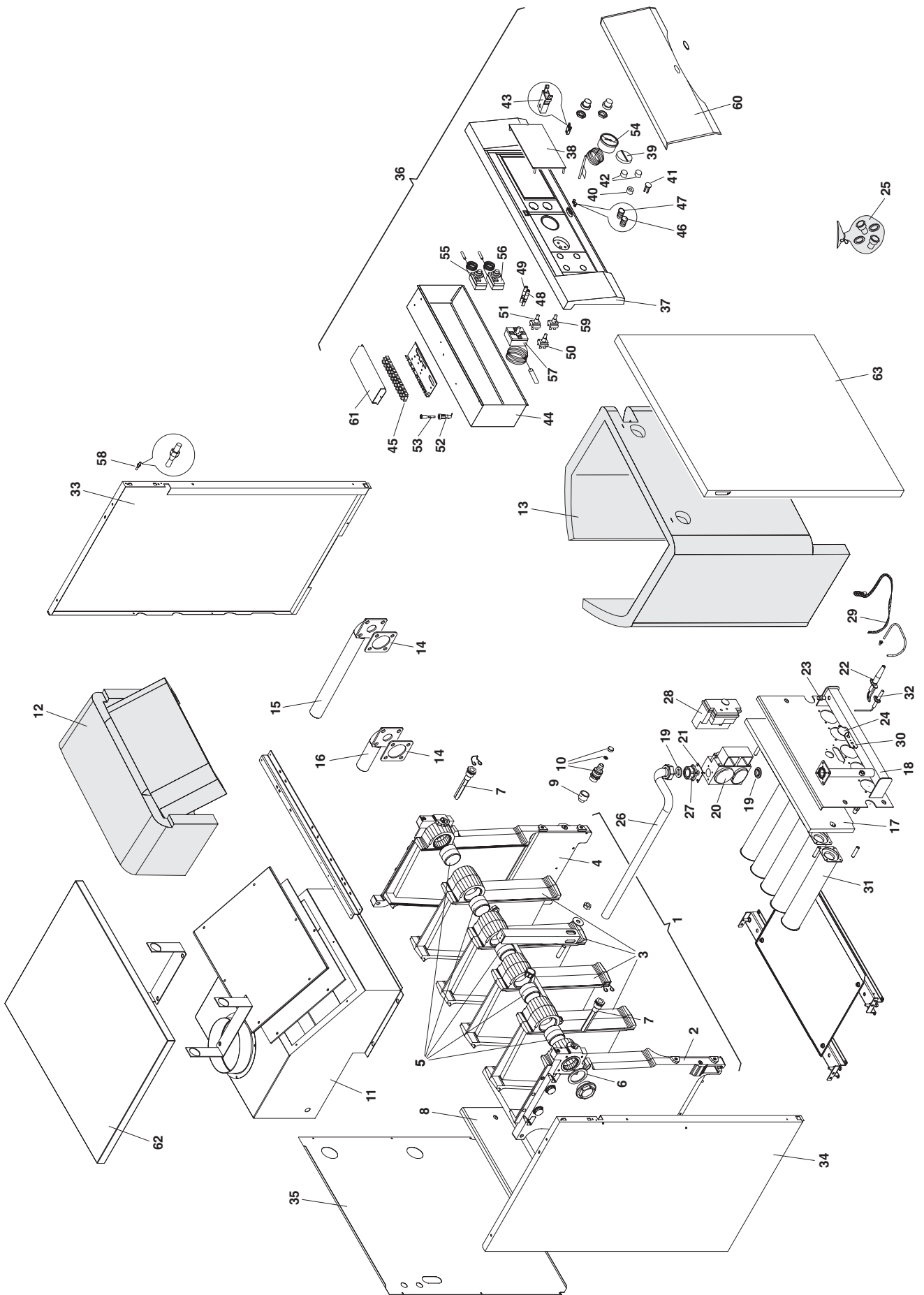
SPARE PARTS EXPLODED VIEW
ON FLOOR STANDING GAS BOILERS
Models

UNOBLOC G 38 RI NG

UNOBLOC G 45 RI NG

Edition 1 of 2 February 2005





MODEL	CODE	SERIAL NO. VALIDITY	REF.
UNOBLOC G 38 RI NG	3300019	2320430500001	A
UNOBLOC G 45 RI NG	3300020	2320430500001	B

PART.	CODE	DESCRIPTION	REF.	NOTE
1	65102668	Condenser	A	
1	65102685	Condenser	B	
2	65102602	Side element (L.H.)		
3	65102603	Intermediate element		
4	65102604	Side element (R.H.)		
5	997318	Biconic union		
6	997405	Gasket		
7	65102607	Probes holder plug		
8	65102669	Insulating panel	A	
8	65102686	Insulating panel	B	
9	65102609	Extension M-F		
10	997390	Drain cock		
11	65102670	Flue hood	A	
11	65102687	Flue hood	B	
12	65102671	Flue hood insulation	A	
12	65102688	Flue hood insulation	B	
13	65102672	Boiler insulation	A	
13	65102689	Boiler insulation	B	
14	997407	Gasket		
15	65102673	Pipe (C.H. flow)		
16	65102674	Pipe (C.H. return)		
17	65102675	Gas manifold insulation	A	
17	65102692	Gas manifold insulation	B	
18	65102676	Gas manifold	A	
18	65102690	Gas manifold	B	
19	997410	Gasket		
20	997343	Gas electrovalve		
21	997411	Gasket		
22	65102626	Electrode (ignition)		
23	997347	Intake (pressure)		
24	997432	Pilot hole cover		
25	65102678	Natural gas burner jet full kit	A	
25	65102691	Natural gas burner jet full kit	B	
26	65102630	Gas inlet pipe		
27	997357	Gas flange		
28	997354	Printed circuit board (flame control)		
29	65102633	Shielding (ignition electrode)		
30	65102634	Electrode holder plate		
31	65102635	Pipe (burner)		
32	65102636	Electrode (Detection)		
33	65102638	Case panel (R.H. side)		
34	65102639	Case panel (L.H. side)		
35	65102679	Case panel (rear)	A	
35	65102693	Case panel (rear)	B	
36	65102680	Electric panel (complete)		
37	65102681	Control panel		
38	65102642	Cover (Thermostat regulation)		
39	65102643	Control knob		
40	65102644	Push button		
41	65102645	Plug		
42	65102646	Button		
43	65102647	Push-Push		
44	65102648	Control panel frame		
45	65102649	Complete wiring (electric panel)		
46	65102650	Signal lamp cap (green)		
47	65102682	Signal lamp cap (red)		
48	65102652	Signal lamp		
49	65102653	Signal lamp		
50	65102655	Bipolar switch		

PART.	CODE	DESCRIPTION	REF.	NOTE
51	65102656	Switch		
52	65102657	Fuses holder		
53	65102658	Fuse		
54	65102659	Thermometer		
55	65102660	Thermostat (safety)		
56	997429	Thermostat (flue safety)		
57	65102662	Thermostat (regulation)		
58	65102663	Rods		
59	65102654	Switch		
60	65102664	Electric box cover		
61	65102665	Service cover		
62	65102683	Case (cover)		
63	65102684	Panel (front case)		

NOTE	DESCRIPTION